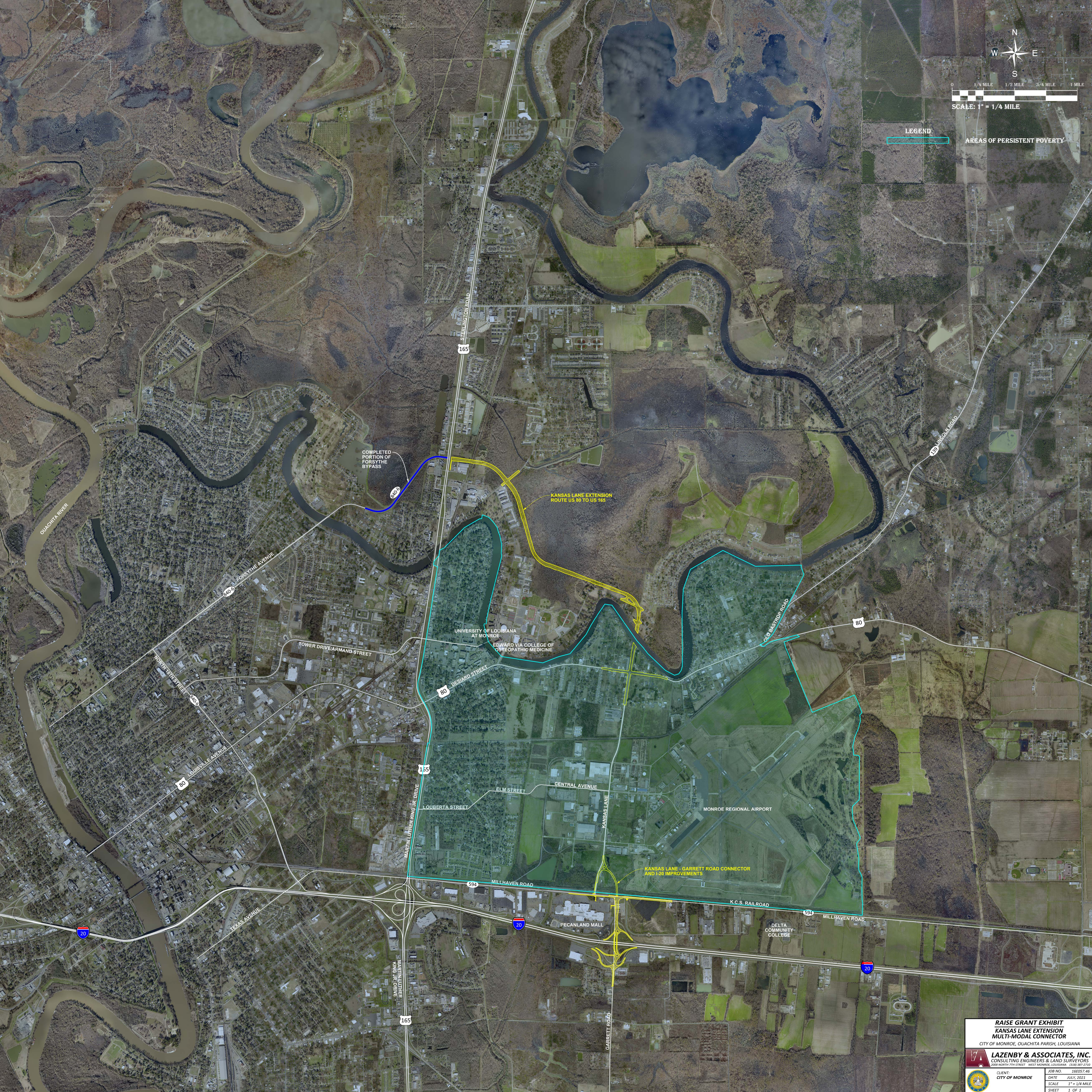




LEGEND
 AREAS OF PERSISTENT POVERTY



RAISE GRANT EXHIBIT
 KANSAS LANE EXTENSION
 MULTI-MODAL CONNECTOR
 CITY OF MONROE, QUACHITA PARISH, LOUISIANA

LAZENBY & ASSOCIATES, INC.
 CONSULTING ENGINEERS & LAND SURVEYORS
 2509 NORTH 7TH STREET, WEST MONROE, LOUISIANA 70091-2208

CLIENT: CITY OF MONROE	JOB NO.: 16E057.46
DATE: JULY, 2021	SCALE: 1" = 1/4 MILE
SHEET: 1 OF 1	