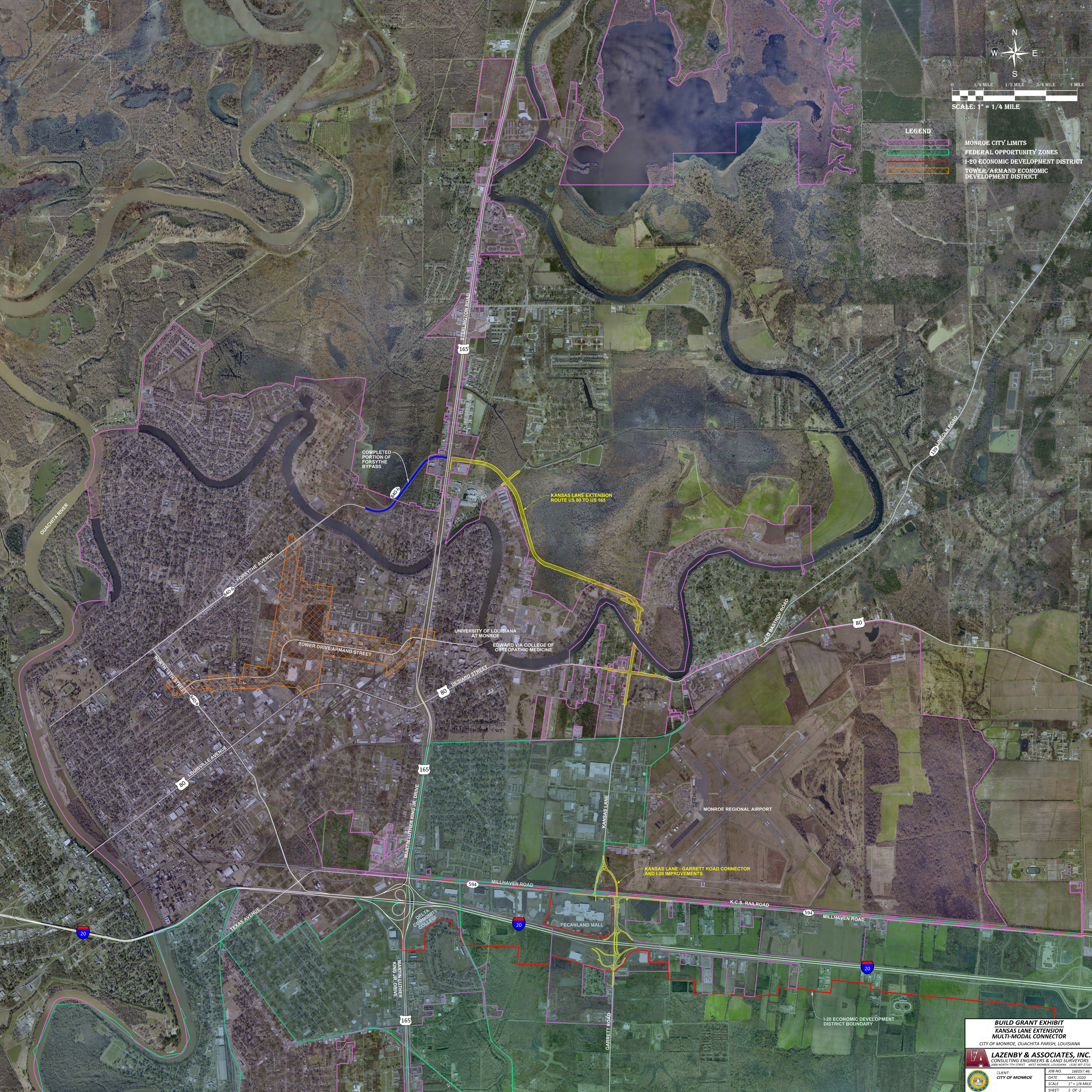




LEGEND

- MONROE CITY LIMITS
- FEDERAL OPPORTUNITY ZONES
- I-20 ECONOMIC DEVELOPMENT DISTRICT
- TOWER/ARMAND ECONOMIC DEVELOPMENT DISTRICT



**BUILD GRANT EXHIBIT
KANSAS LANE EXTENSION
MULTI-MODAL CONNECTOR**
CITY OF MONROE, OUACHITA PARISH, LOUISIANA

LAZENBY & ASSOCIATES, INC.
CONSULTING ENGINEERS & LAND SURVEYORS
2009 NORTH 7TH STREET, WEST MONROE, LOUISIANA 70091-2200

CLIENT: CITY OF MONROE	JOB NO.: 16E057-46
DATE: MAY, 2020	SHEET: 1 OF 1
SCALE: 1" = 1/4 MILE	